



## Lorne 34

4 2 2

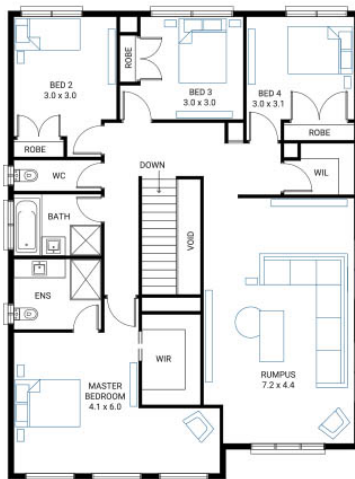
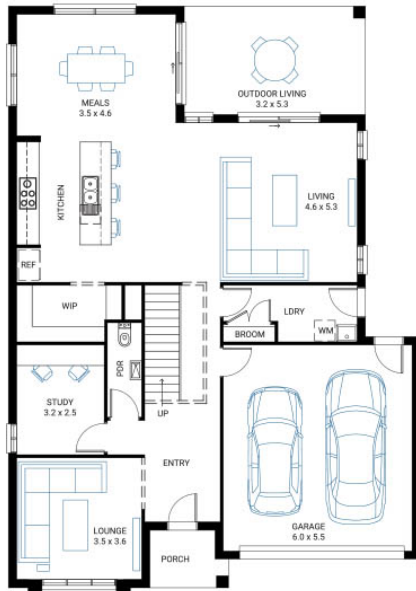
**Address**  
Lot 2114, Orana, Clyde North, 3978

**Facade**  
Bay

**Lot Width**  
14

**Lot size**  
350 m<sup>2</sup>

**House size**  
320 m<sup>2</sup>



### Available Structural Options

Ground Floor Additional Master Suite, First Floor Grand Ensuite, Balcony Option 1, Balcony Option 2, Butler's Pantry, Rear Flip, Deluxe Kitchen, WIR to Bed 2 and 3,

### Your Inclusions

- 30K REBATE
- 'H' class waffle concrete slab
- Double glazing throughout
- Colorbond® corrugate roof with 22.5-degree roof pitch
- Dimmable LED downlights to main Living areas
- Flooring throughout (tiles and carpet)
- 'Quantum Quartz' engineered stone benchtops with 20mm edge profile, to Kitchen
- 900mm Kitchen Appliances
- Laminate overhead cupboards with concealed rangehood to Kitchen
- Tiled shower bases to Bathroom and Ensuite
- Gas ducted heating
- 'Colorbond' sectional overhead door with automated lifter and remote controls
- Solar PV system
- 25-year structural guarantee
- 12-month maintenance period
- 7-Star energy rating compliance
- Trusted New Home Builder in Melbourne, Victoria for over 25 years

Package Enquiries  
Dale Bridgland - 0448421941,  
dale.bridgland@beachwoodhomes.com.au

