



## New Haven 22

4  2  2 

**Address**  
Lot 79, Crownlea, Warragul, 3820

## Facade Mode

Lot Width  
13.9

**Lot size**  
525 m<sup>2</sup>

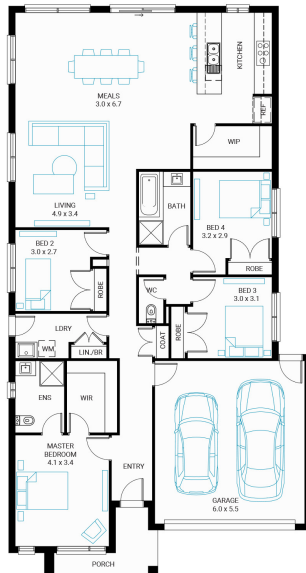
**House size**  
207 m<sup>2</sup>

## Available Structural Options

Theatre, U Shape Kitchen, Study With Butlers Pantry, Butlers Pantry, Study, RearFlip, PowderRoom, Outdoor Living 2, Outdoor Living 1, Deluxe Ensuite, Grand Ensuite,

## Your Inclusions

- 'H' class waffle concrete slab
- Double glazing throughout
- Insect Screens with fibreglass mesh throughout
- Dimmable LED downlights to main Living areas
- Flooring throughout (tiles and carpet)
- 'Quantum Quartz' engineered stone benchtops with 20mm edge profile, to Kitchen
- 900mm Kitchen Appliances
- Laminate overhead cupboards with concealed rangehood to Kitchen
- Tiled shower bases to Bathroom and Ensuite
- Gas ducted heating
- 'Colorbond' sectional overhead door with automated lifter and remote controls
- Solar PV system
- 25-year structural guarantee
- 12-month maintenance period
- 7-Star energy rating compliance
- Trusted New Home Builder in Melbourne, Victoria for over 25 years



Package Enquiries  
Leanne Marshall - 0409 449 841,  
[leanne@beachwood-homes.com.au](mailto:leanne@beachwood-homes.com.au)

