

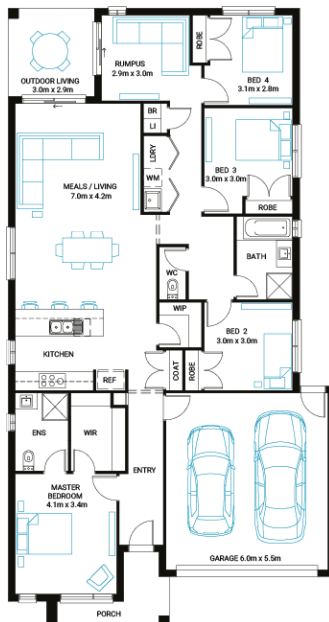


## Wave 22

4 2 2

**Address**  
Lot 5420, Meridian, Clyde North, 3978

**Facade Mode** **Lot Width** 12.5 **Lot size** 350 m<sup>2</sup> **House size** 207 m<sup>2</sup>



### Available Structural Options

Grand Outdoor, Bed 5, U- Shape Kitchen, Rear Flip, Conventional Laundry, Powder, Deluxe Ensuite,

### Your Inclusions

- 'H' class waffle concrete slab
- Double glazing throughout
- Insect Screens with fibreglass mesh throughout
- Dimmable LED downlights to main Living areas
- Flooring throughout (tiles and carpet)
- 'Quantum Quartz' engineered stone benchtops with 20mm edge profile, to Kitchen
- 900mm Kitchen Appliances
- Laminate overhead cupboards with concealed rangehood to Kitchen
- Tiled shower bases to Bathroom and Ensuite
- Gas ducted heating
- 'Colorbond' sectional overhead door with automated lifter and remote controls
- Solar PV system
- 25-year structural guarantee
- 12-month maintenance period
- 7-Star energy rating compliance
- Trusted New Home Builder in Melbourne, Victoria for over 25 years

Package Enquiries  
Dale Bridgland - 0448421941,  
dale.bridgland@beachwoodhomes.com.au

**MERIDIAN**  
CLYDE NORTH