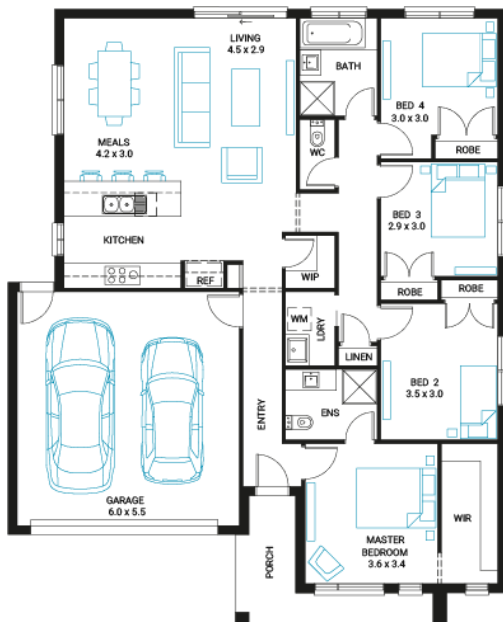




## Murray 19

4 2 2

| Address                                    | Facade  | Lot Width | Lot size           | House size         |
|--|---------|-----------|--------------------|--------------------|
| Lot 222, CrestWood Place, Cranbourne, 3977 | Pacific | 14.9      | 367 m <sup>2</sup> | 179 m <sup>2</sup> |



### Available Structural Options

U Shape Kitchen, L Shape Kitchen, Outdoor Living, Theatre,

### Your Inclusions

- 'H' class waffle concrete slab
- Double glazing throughout
- Insect Screens with fibreglass mesh throughout
- Dimmable LED downlights to main Living areas
- Flooring throughout (tiles and carpet)
- 'Quantum Quartz' engineered stone benchtops with 20mm edge profile, to Kitchen
- 900mm Kitchen Appliances
- Laminate overhead cupboards with concealed rangehood to Kitchen
- Tiled shower bases to Bathroom and Ensuite
- Gas ducted heating
- 'Colorbond' sectional overhead door with automated lifter and remote controls
- Solar PV system
- 25-year structural guarantee
- 12-month maintenance period
- 7-Star energy rating compliance
- Trusted New Home Builder in Melbourne, Victoria for over 25 years

Package Enquiries  
Dale Bridgland - 0448421941,  
dale.bridgland@beachwoodhomes.com.au

