



## Norfolk 28

4 2 2

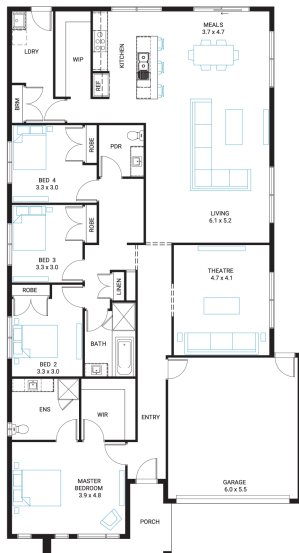
Address	Facade	Lot Width	Lot size	House size
Lot 4651, Meridian, Clyde North, 3978	Pacific	14	448 m <sup>2</sup>	262 m <sup>2</sup>

### Available Structural Options

Grand Ensuite, Butler's Pantry, U-Shape Kitchen, L-Shape Kitchen, Deluxe Kitchen, Office, Outdoor Living, Grand Outdoor Living, Rear Flip,

### Your Inclusions

- 'H' class waffle concrete slab
- Double glazing throughout
- Insect Screens with fibreglass mesh throughout
- Dimmable LED downlights to main Living areas
- Flooring throughout (tiles and carpet)
- 'Quantum Quartz' engineered stone benchtops with 20mm edge profile, to Kitchen
- 900mm Kitchen Appliances
- Laminate overhead cupboards with concealed rangehood to Kitchen
- Tiled shower bases to Bathroom and Ensuite
- Gas ducted heating
- 'Colorbond' sectional overhead door with automated lifter and remote controls
- Solar PV system
- 25-year structural guarantee
- 12-month maintenance period
- 7-Star energy rating compliance
- Trusted New Home Builder in Melbourne, Victoria for over 25 years



Package Enquiries  
Dale Bridgland - 0448421941,  
dale.bridgland@beachwoodhomes.com.au

**MERIDIAN**  
CLYDE NORTH