



Albany 25

4 2 2

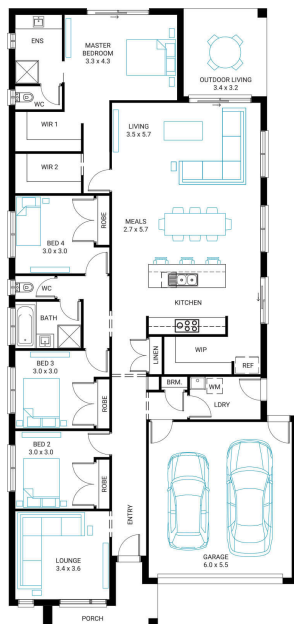
Address
Lot 4828, Meridian, Clyde North, 3978

Facade
Cove

Lot Width
12.5

Lot size
430 m²

House size
236 m²



Available Structural Options

Fifth Bedroom, Theatre Room, Additional Master Suite, Butler's Pantry, U Shape Kitchen, Study, Rear Flip,

Your Inclusions

- 'H' class waffle concrete slab
- Double glazing throughout
- Insect Screens with fibreglass mesh throughout
- Dimmable LED downlights to main Living areas
- Flooring throughout (tiles and carpet)
- 'Quantum Quartz' engineered stone benchtops with 20mm edge profile, to Kitchen
- 900mm Kitchen Appliances
- Laminate overhead cupboards with concealed rangehood to Kitchen
- Tiled shower bases to Bathroom and Ensuite
- Gas ducted heating
- 'Colorbond' sectional overhead door with automated lifter and remote controls
- Solar PV system
- 25-year structural guarantee
- 12-month maintenance period
- 7-Star energy rating compliance
- Trusted New Home Builder in Melbourne, Victoria for over 25 years

Package Enquiries
Dale Bridgland - 0448421941,
dale.bridgland@beachwoodhomes.com.au

MERIDIAN
CLYDE NORTH